

# SUPA EPIC SCAVENGER HUNT!

FIND 12 OF YOUR FAVORITE DAV PILKEY CHARACTERS.

☐


## DOG MAN

PART DOG, PART MAN, ALL HERO

☐


## PETEY

AKA PAPA, INVENTOR

☐

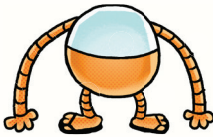

## LI'L PETEY

AKA CAT KID, PETEY'S CLONE &  
CO-CREATOR OF CAT KID COMIC CLUB

☐


## MOLLY

AKA TADPOLE, LI'L PETEY'S BEST FRIEND  
& CO-CREATOR OF CAT KID COMIC CLUB

☐


## 80-HD

AKA 80-HEXOTRON DROIDFORMIGON, LIGHTNING DUDE

☐


## CHIEF

DOG MAN'S BOSS & LOYAL BEST FRIEND

☐


## NURSE LADY

SMART & BRAVE HEALTHCARE PROFESSIONAL

☐

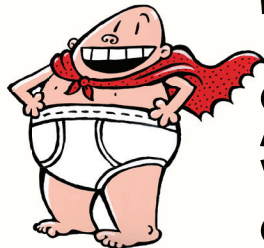

## SARAH HATOFF

WORLD'S GREATEST REPORTER

☐


## PIGGY

LEADER OF THE FLEAS (FUZZY LITTLE EVIL ANIMAL SQUAD)

☐


## CAPTAIN UNDERPANTS

AKA PRINCIPAL KRUPP,  
WHO GETS HYPNOTIZED INTO BECOMING A SUPERHERO

☐


## GEORGE & HAROLD

THE CREATORS OF CAPTAIN UNDERPANTS

REPRODUCIBLE

DOG MAN, CAPTAIN UNDERPANTS art © Dav Pilkey. SCHOLASTIC, GRAPHIX and associated logos are trademarks and/or registered trademarks of Scholastic Inc.

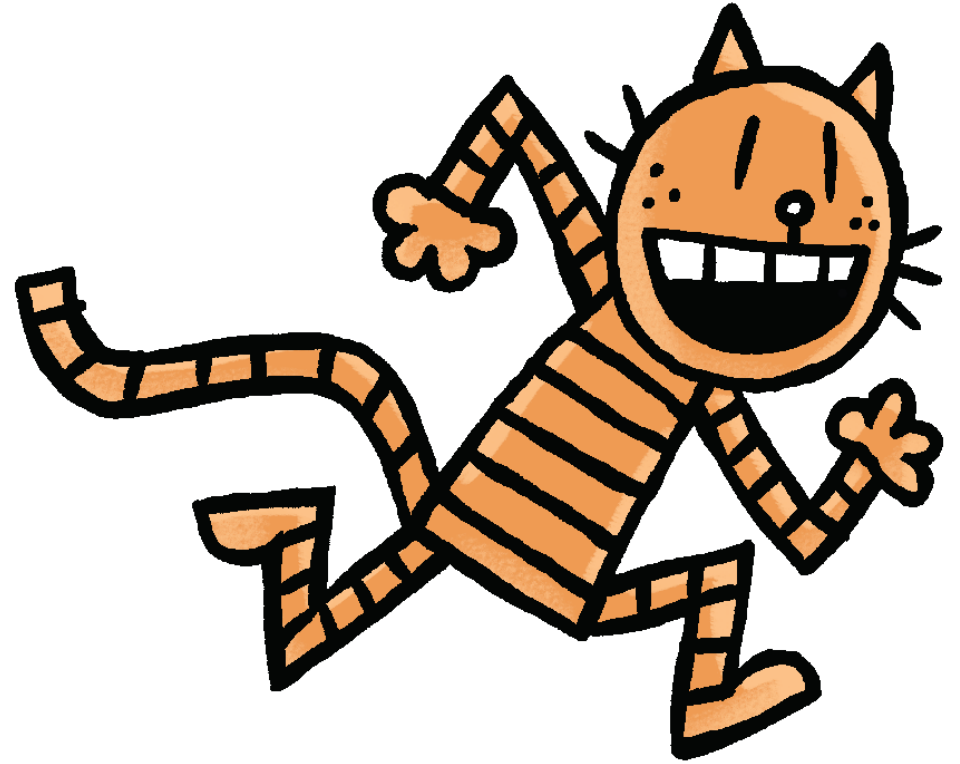
PLANETPILKEY.COM

SCHOLASTIC





**DOG MAN**

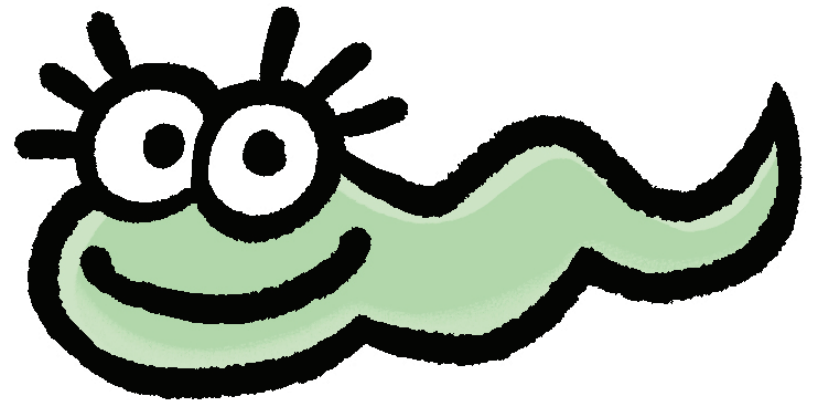


**PETEY**



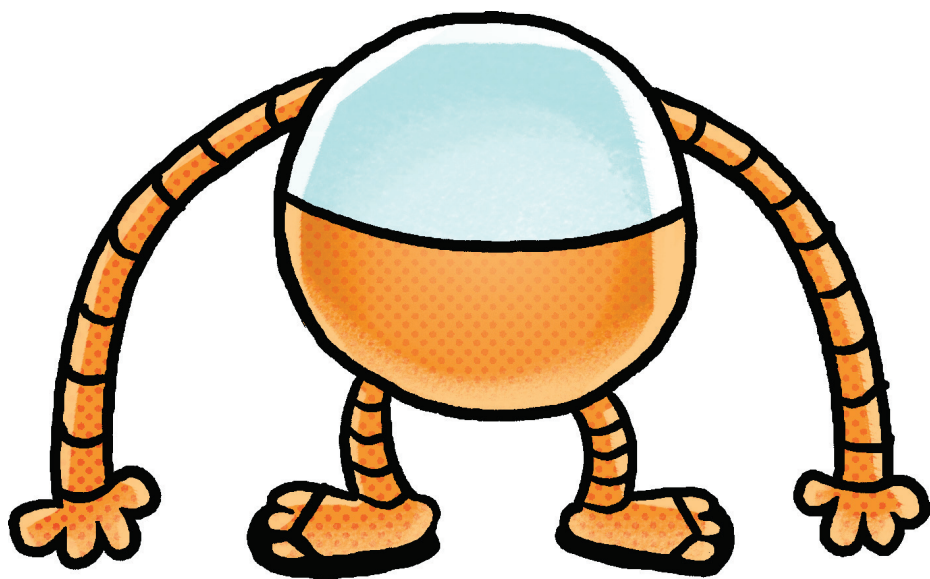


**LI'L PETEY**



**MOLLY**





**80-HD**



**CHIEF**





**NURSE LADY**

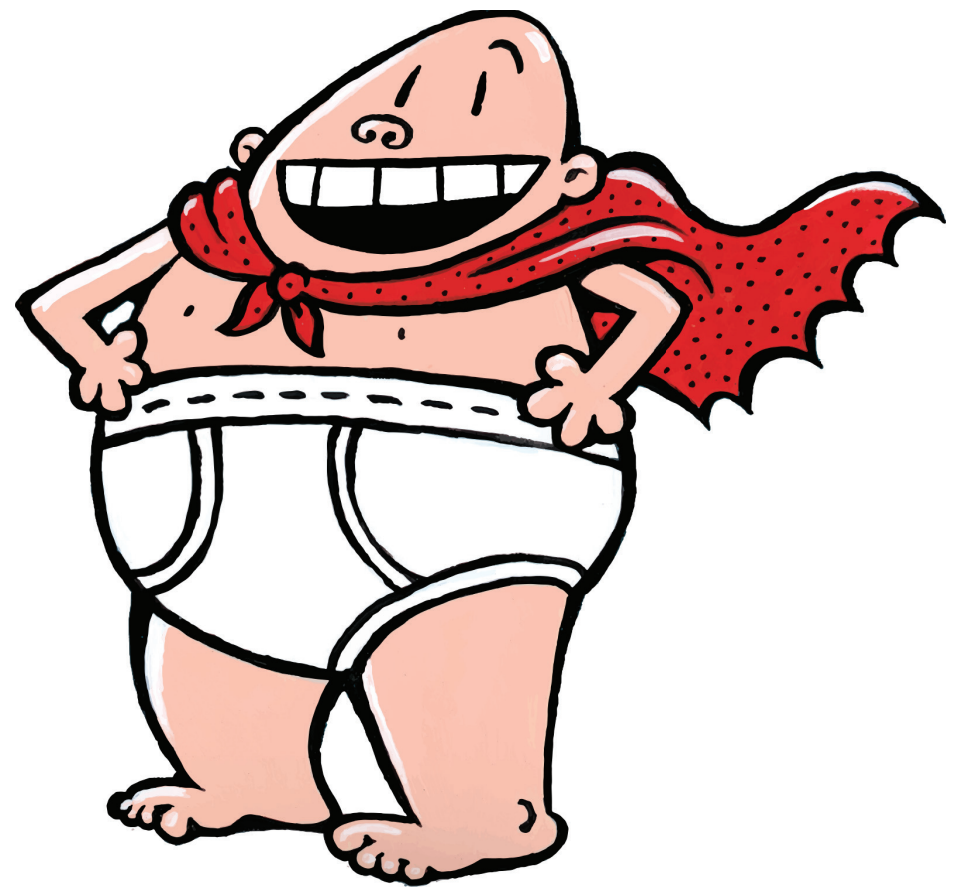


**SARAH HATOFF**





**PIGGY**



**CAPTAIN  
UNDERPANTS**







**GEORGE &  
HAROLD**

